



Six months on!

On 15 November Crossrail reached the six month milestone since the start of construction work.

Detailed design work on Europe's largest infrastructure project is advancing well. Enabling works are happening at many sites with works having started at Canary Wharf, on the new London Underground/Crossrail station at Tottenham Court Road, the Thameslink/Crossrail station at Farringdon, Paddington station and the Pudding Mill Lane portal site.

The project has also passed a fourth stringent external review by the Treasury's Major Project Review Group and is now poised to move on to the main construction of the railway in 2010.

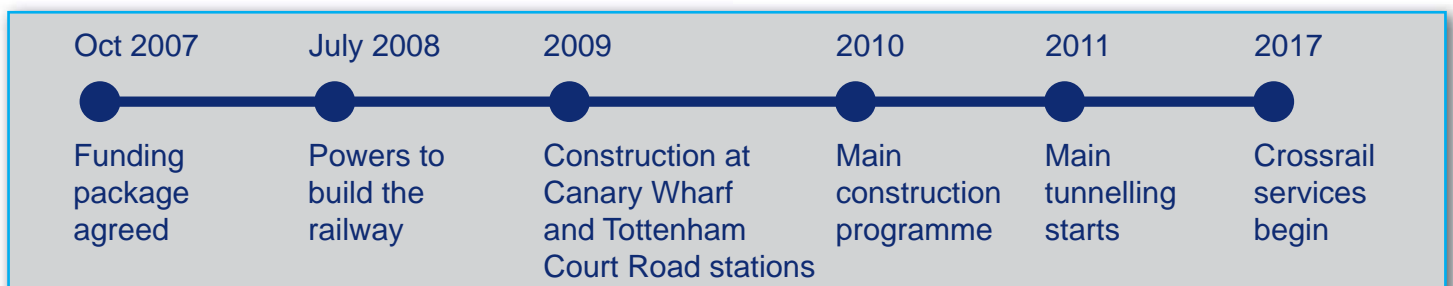
'Over the past six months the momentum driving Crossrail has been unstoppable. We have put together a very strong management team capable of taking this project through to 2017,' said Rob Holden, Crossrail's Chief Executive.

Transport minister Sadiq Khan visited Farringdon station in November to see Network Rail's progress on the £250m scheme to build an integrated Thameslink and Crossrail ticket hall to cater for the hugely improved services to the station proposed by both projects.

Mr Khan said he was pleased to see the work well underway to make the Crossrail vision a reality 'and translate the government's multi-billion pound investment into better services for people travelling through London and the wider UK'.



Transport minister Sadiq Khan (centre) visited Farringdon station in November



Timescale for construction starting at key stations (preliminary works will take place



* This is the date for Crossrail construction – the Thameslink programme starts before this date

** This is the Crossrail construction – other Network Rail and London Underground related work takes place before this date

Tunnelling contracts

The core Crossrail construction programme begins next year, with main tunnelling commencing in 2011.

A short list of companies are being invited to tender for two principal tunnelling contracts.

The Tunnels West contract involves the construction of 6.2km of twin 6m diameter bored tunnels from Royal Oak and a Portal (tunnel entrance) west of Paddington Station, through to the new Crossrail Farringdon Station.

The Tunnels East contract involves the construction of three drives of twin 6m diameter bored tunnels from:

- Limmo Peninsula at the mouth of the River Lea, through to the new Crossrail Farringdon station (approximately 8.3km);
- Limmo Peninsula through to Victoria Dock Portal (approximately 0.9km); and
- Stepney Green through to Pudding Mill Lane Portal (approximately 2.7km).

The successful contractors will also commence design and construction of a tunnel segment manufacturing facility. This will ensure there will be a sufficient supply of tunnel lining segments available when tunnelling starts.

Design work contracts awarded

Twelve firms have had the opportunity to compete for packages of design work on the Crossrail project, including work on tunnels and

shafts, stations, and railway systems. Crossrail has almost completed the process of awarding design contracts and is well into the detailed design phase. All central London station design contracts have been awarded.



Farringdon: works on Cardinal House

Crossrail works at Farringdon began recently as Network Rail started deconstruction work on Cardinal House, the eleven storey tower that stands above the site of the new station. Network Rail will build the new combined Thameslink and Crossrail ticket hall on the site, transforming Farringdon into one of London's best-connected transport hubs.

By early spring, all 12 storeys of Cardinal Tower will be meticulously deconstructed, as thousands of sections of concrete are cut out of the building piece by piece, crushed on site to be reused or recycled. Once the deconstruction is complete, work will continue downwards, as piling and substructure works begin.

before these dates)

Late
2011

Late
2012

Liverpool St

Custom
House

Tunnelling start dates (launch of boring machines)

Late
2011

Early
2012

Mid
2012

Mid
2013

Mid
2014

Royal Oak –
Farringdon

Limmo
Peninsula –
Farringdon

Plumstead
– North
Woolwich

Stepney Green
- Pudding
Mill Lane

Limmo
Peninsula –
Custom House

Paddington Station

Works have started on the 'Triangle site'. This will facilitate the start of construction of the new taxi facility and the rebuild of the Hammersmith & City Line station. The taxi facility is expected to be operational by mid 2011 to enable the start of construction for the main Crossrail station in Eastbourne Terrace. It will provide improved access for London taxi-drivers into the station.

Crossrail acquires Hanover Square Site

Crossrail has now taken permanent possession of office buildings at 18 & 19 Hanover Square and 1a Tenterden Street, with temporary rights taken at Dering Yard and Medici Court access way.

The land will be used for the construction of the Bond Street East Ticket Hall. Hoardings will be set up around the site before Christmas.

Great Portland Estates and Crossrail have entered into a joint working group to progress the over site development following the completion of the Crossrail works.

Tottenham Court Road

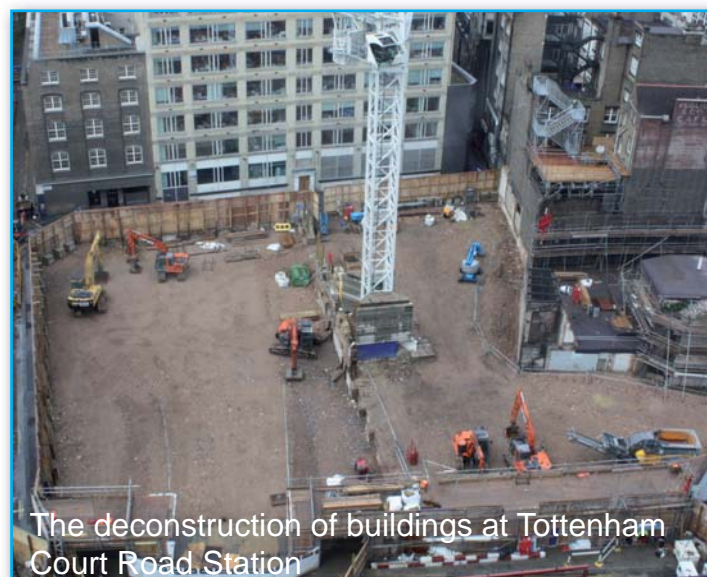
The deconstruction of buildings at the junction of Charing Cross Road and Oxford Street, and between Denmark Place and Centre Point, is completed. This work was essential for the rebuild of Tottenham Court Road Tube station to go ahead. Starting earlier this year, it has taken

approximately nine months to survey, strip-out and then take down each building, floor by floor. Due to the constraints of the sites, in close proximity to residential, office and retail properties, this has been a painstaking process, with each building carefully dismantled over the summer months.

Over 95 per cent of the material from these sites has been recycled and much is being re-used on site. This has reduced the number of lorries in the area and dramatically cut what would otherwise have been sent to landfill.

Properties have been acquired for the Goslett Yard work site and will start to come down in early 2010. This will form part of the larger Eastern Ticket Hall site.

Transport for London (TfL) announced in early December that it intends to award the contract for the redevelopment of Tottenham Court Road Tube station to Taylor Woodrow Construction and BAM Nuttall Limited.



Work starts on Dean Street ticket hall

Work has begun on the Dean Street ticket hall at the western end of the station. This will serve both Crossrail and London Underground services.

Ground investigations began in October in Dean Street, Fareham Street and Great Chapel Street. The main enabling works will start in early January 2010 with utility diversions at the north end of Dean Street.

The enabling works will require long term closures of Dean Street (between Oxford Street, and Diadem Court) Great Chapel Street and Fareham Street. Acquired buildings for the Dean Street work site will begin to come down early in 2010.

A materials storage area is planned to be established on the east side of Newman Street adjoining the Royal Mail office. A number of residential, paid-for and motorcycle parking bays located on both sides of Newman Street will need to be suspended long term for this area.

To co-ordinate with the works on Oxford Street, lorries are planned to travel to the site using Mortimer Street, Berners Street and a short section of Oxford Street. It is proposed they will exit the site travelling northbound along Newman Street and Goodge Street. The routes are currently being discussed with Westminster and Camden councils and the impact on local residents will be managed and communicated to them in due course.

Transporting materials along the Thames

Crossrail Ltd has signed a Memorandum of Understanding with the Port of London Authority to confirm its commitment to use barges and ships along the Thames to move excavated materials. If the equivalent five million cubic metres were to be transported by road they

Canary Wharf

Work is proceeding to schedule and since the first Giken pile was launched on 15 May, 280 of 294 Giken tubes have been installed

Approximately 65 percent of the contiguous piles, which support the Giken piles, have been installed and the installing of the anchor piles has started.

The installation of the capping beam, which forms part of the coffer dam on the outside of the worksite, has commenced

Health and safety management

The Crossrail *Health Safety and Environment: Contractors and Industry Partners Standard* has been published and is available on the Crossrail website at <http://www.crossrail.co.uk/construction/health-safety-and-environment>. It sets the health and safety related framework and mandated Standards that apply to the supply chain engaged on the project. The document is also intended for use as reference by industry partners and stakeholders in helping set benchmarks for health and safety activity.

would require up to half a million lorry journeys. Around 85 per cent of the excavated material from all Crossrail sites will be moved by rail or water.

Information Centre holiday closure

The Crossrail Visitor Information Centre is at 16-18 St Giles High Street, WC2H 8LN (opposite the junction with Denmark Street) and is open every Tuesday and Thursday from 12noon to 8pm.

Over the holiday period, the Centre will be closed on 24, 29 and 31 December 2009.

The Centre will re-open Tuesday 5 January 2010 from 12noon to 8pm.