



Winter update 2009

Halving waste to landfill

We joined an initiative run by the national waste advisory body, WRAP, to halve the amount of construction waste sent to landfill by 2012.

As part of this commitment, we agreed to maintain corporate policies on construction waste, to set annual corporate targets and project-specific targets, and to report publicly on our waste performance.

We are already working with our contractors to divert a minimum of 95% of demolition and strip-out material waste from landfill, as well as 85% of construction waste and 90% of fit-out waste for common parts projects. We aim to achieve zero demolition waste to landfill by 2010.

The great thing about the WRAP initiative is that everyone who signs up has a standardised way to measure waste - so it becomes much easier to co-ordinate our efforts to push waste reduction throughout our portfolio and our supply chain."

- Sustainable Developments Executive at British Land, Sarah Cary
Email sarah.cary@britishland.com to find out more

To reduce the amount of waste generated we plan to set targets for tonnes of waste per £100,000 construction spend. This is in line with Constructing Excellence key performance indicators. Since September, our retail construction teams have also been monitoring waste generated on projects with a construction value of more than £300,000.

Working together

WRAP launched this voluntary industry initiative to reduce construction waste to landfill, demonstrating how construction clients can make positive changes throughout the supply chain.

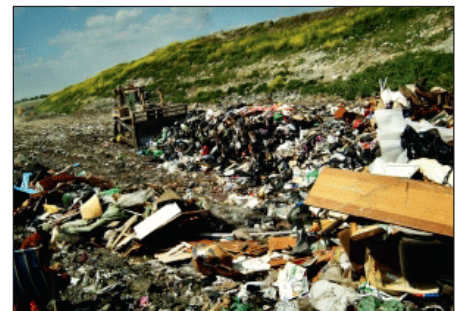
www.wrap.co.uk



83% of construction waste diverted from landfill so far this year



7,500 tonnes of waste diverted from landfill saving £300,000 on taxes



Visit our full management update at www.britishland.com/update